

Providence R.I.

This plat accompanies our report of this date

PROVIDENCE, R. I. CITY ENGINEER'S OFFICE STREET LINE DEPT.

Feb. 18, 1889

014701

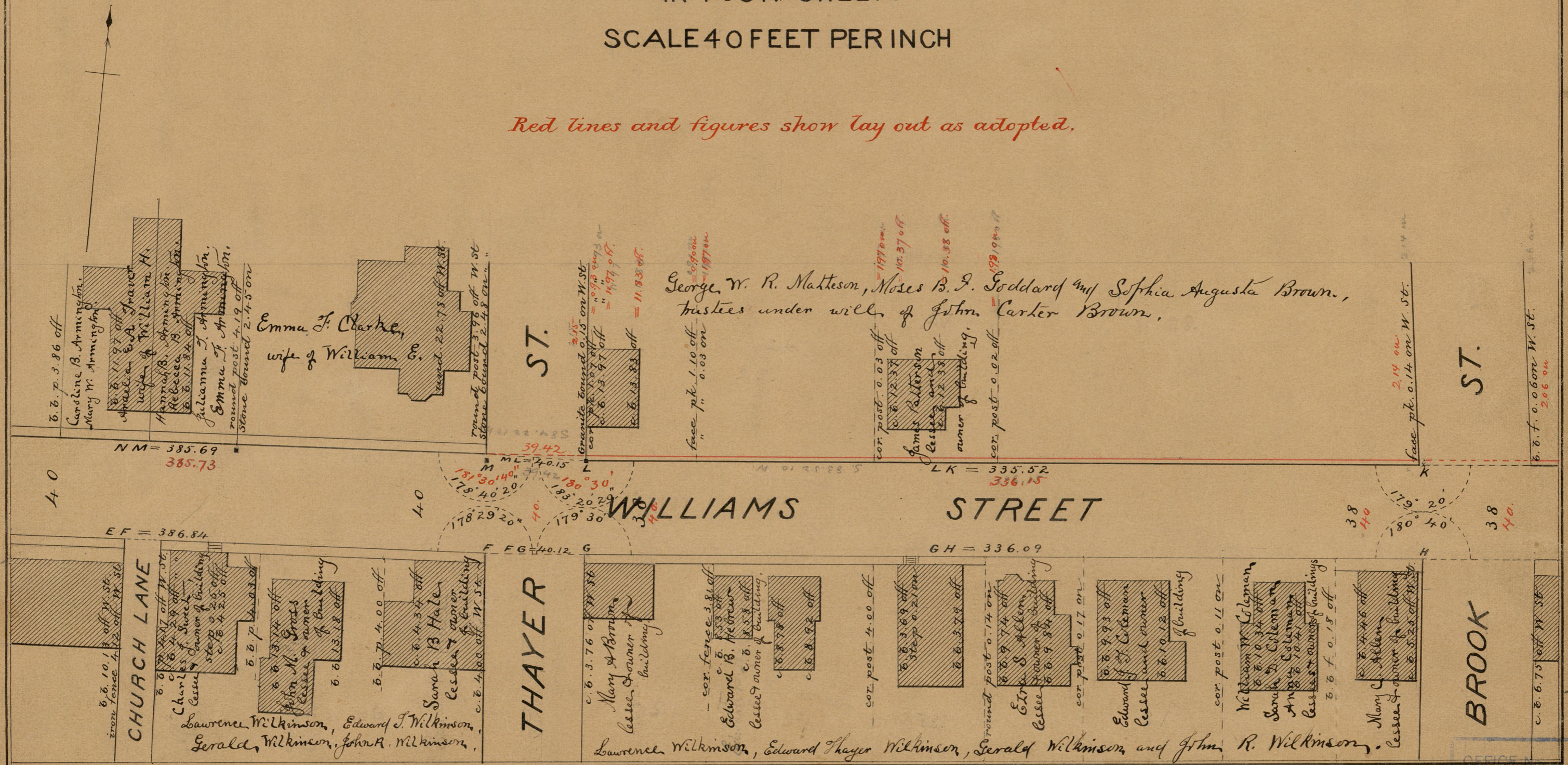
# PLAT OF WILLIAMS STREET

FROM SOUTH MAIN ST. TO HOPE ST.

IN FOUR SHEETS

SCALE 40 FEET PER INCH

Red lines and figures show lay out as adopted.



83 B-65

9948

83

B-65